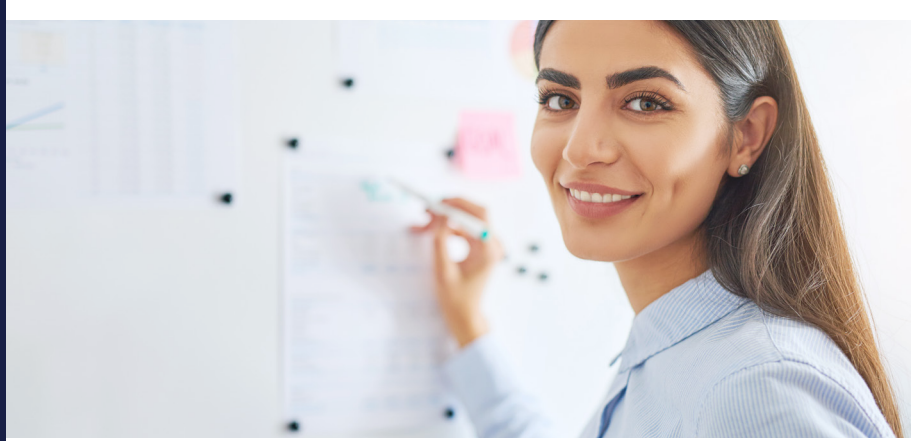


# CSU Global

## Save 10% on Your K-12 Math or English Dual-Enrollment Specialization



**Douglas County School District has partnered with Colorado State University Global** to offer DCSD employees a 10% discount (\$450 per credit hour) on CSU Global's highly regarded online dual enrollment specialization in Math and/or English for K-12 Educators

Complete 18 credits of graduate coursework as part of a Master's degree or standalone program, in less than one year. Improve your leadership competencies, intellect, and professional knowledge of K-12's best and emerging practices, enhanced with a concentration in Math and/or English.

This regionally accredited 100% online program allows you to deepen your education and advance your career without interrupting your work and personal life.

### English for K-12 Educators Specialization

The following 18-credit hour sequence can qualify existing K-12 English instructors to teach dual-enrollment courses. This program is designed for those who have already completed 32+ credit hours of undergraduate English courses.

**ENG501: Studies and Composition Studies in Pedagogy** will explain the process for teaching composition in high school and college based on current pedagogies, as well as solutions to problems that arise around teaching students how to write in the digital age.

**ENG510: Literary Criticism Theory** provides a guide on how to use various theoretical lenses to develop coherent criticism of a literary text.

**ENG515: History and Theory of Rhetoric** will cover the various approaches to teaching rhetoric in high school and college based on traditional theories, and will examine the historical development of rhetoric from ancient Greece to the 21st century.

**ENG520: Advanced Studies in World Literature** will study different literary genres and styles from a range of global literature perspectives, including the traditional masterpieces, such as Homer's *The Odyssey* and Achebe's *Things Fall Apart*.

**ENG525: British Romantic Literature** will cover themes including nature, revolution, and democratic government, the dominance of feelings and emotion over reason and logic, and more, during the British Romantic period.

**ENG532: American Literature WWI to Present** will cover the two major literary movements that occur during this period: Modernism and Postmodernism.

## Math for K-12 Educators Specialization

The following 18-credit hour sequence can qualify existing K-12 math instructors to teach dual-enrollment courses. This program is designed for those who have already completed 32+ credit hours of undergraduate mathematics courses.

**MTH525 Discrete Mathematics** will introduce discrete structures, and cover topics ranging from set theory, logic, number theory, recursion, combinatorics, graph theory, and basic probability.

### MTH530 Foundation and Applications of Analysis I

I provides an overview of analysis principles and implications, including differential and integral calculus, to differential equations and analysis of complex variables.

### MTH531 Foundation and Applications of Analysis II

II provides an extended look at differential and integration calculus, differential equations, and analysis of complex variables.

**MTH540 Higher Geometry** covers the foundations of Euclidean and non-Euclidean geometries (geometry of Lobachevski/Hyperbolic geometry, Spherical geometry), as well as a historical study of parallel postulate and discussion of the study of Axiomatic systems.

**MTH545 Mathematical Modeling** will especially focus on simulation using computer algebra systems, optimization, dynamic models, and stochastic models.

**MTH556 Advanced Probability and Statistics** will introduce students to a range of probability and statistical concepts, with a foundation in calculus. Topics range from axioms of probability (Kolmogorov) to Poisson processes, as well as Markov chains and Limit theorems.

## Enroll today!

With terms starting every four weeks, you can begin the next part of your educational and career journey soon.

### Upcoming Start Dates:

#### 2019

August 12  
September 9  
October 7  
November 11  
December 9

#### 2020

January 13  
February 10  
March 16  
April 13  
May 11  
June 8

## Contact:

**Julie Hoefs, MAEd,**  
Senior Enrollment Counselor

Phone: 720-279-1150

Email: Julie.Hoefs@CSUGlobal.edu

